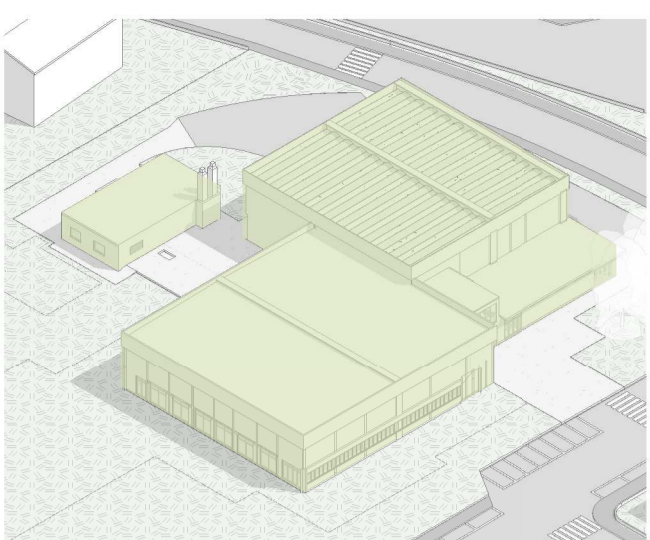
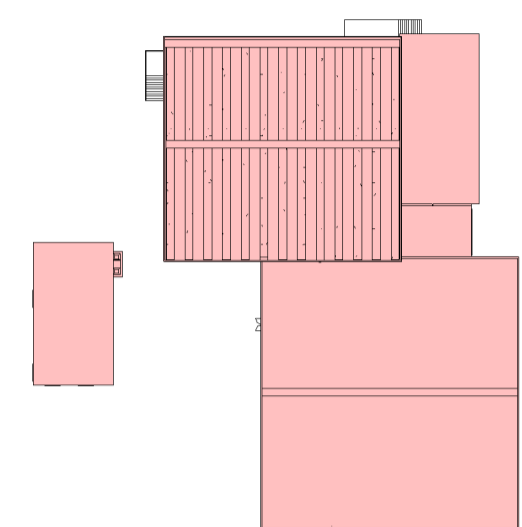


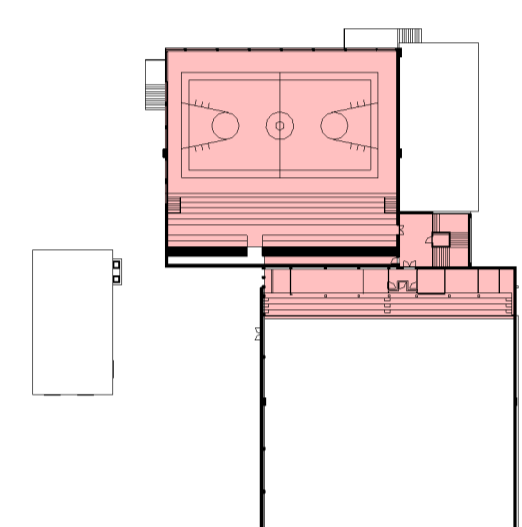
02.A 1975/1978 - COSTRUZIONE NUCLEO ORIGINALE



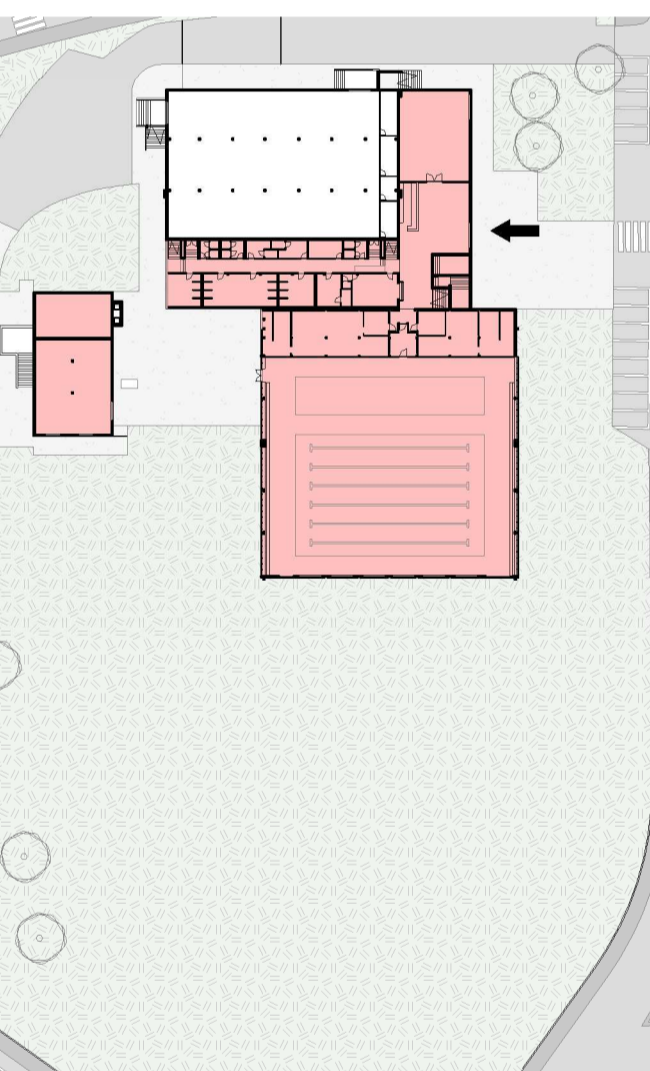
VISTA ASSONOMETRICA



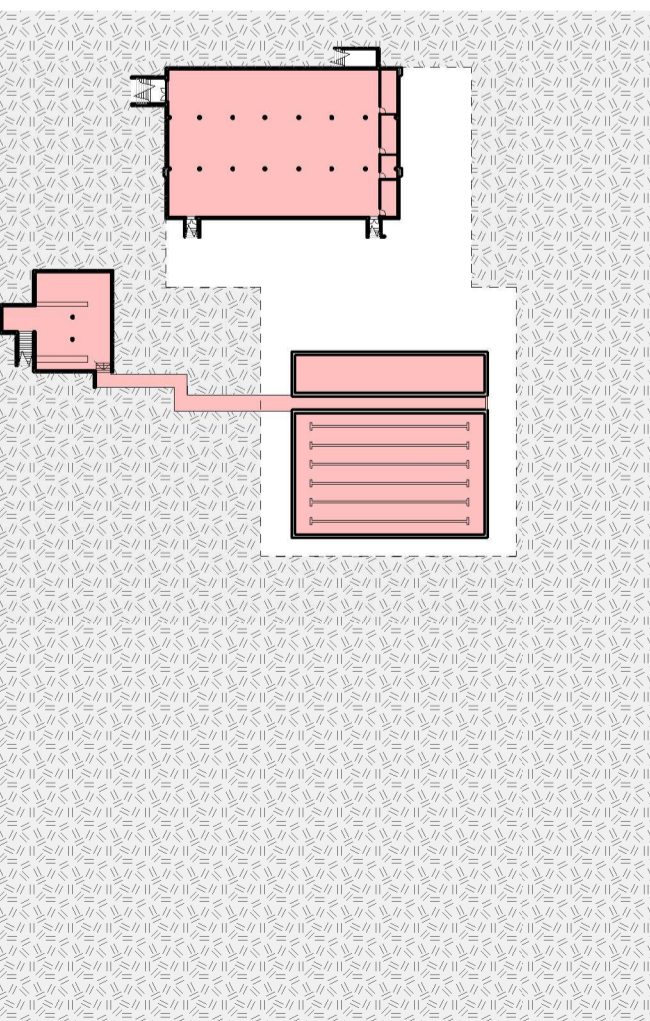
PIANTA COPERTURA



PIANTA PIANO PRIMO

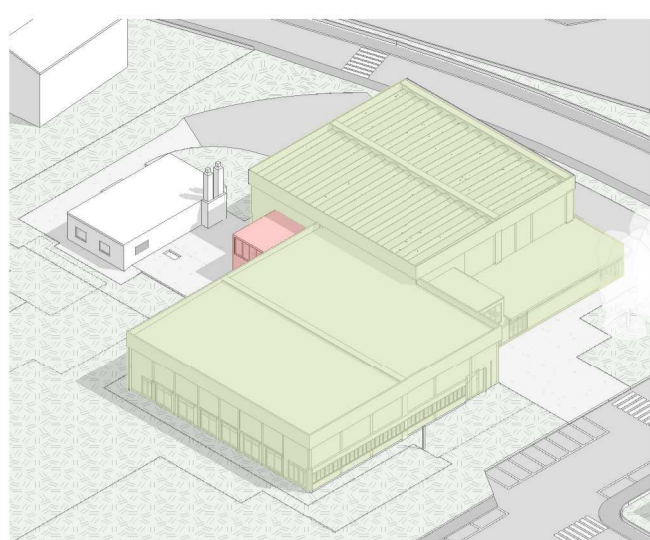


PIANTA PIANO TERRA

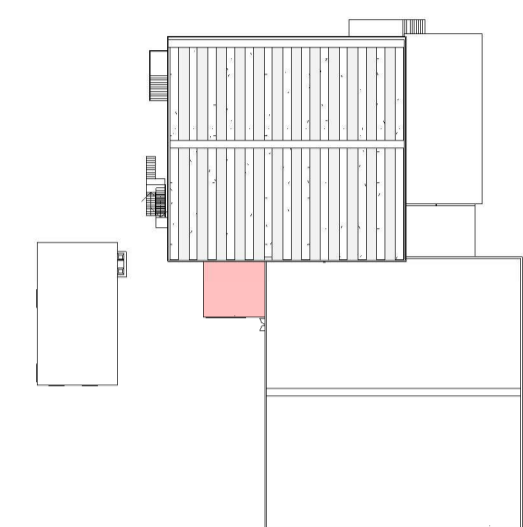


PIANTA PIANO INTERRATO

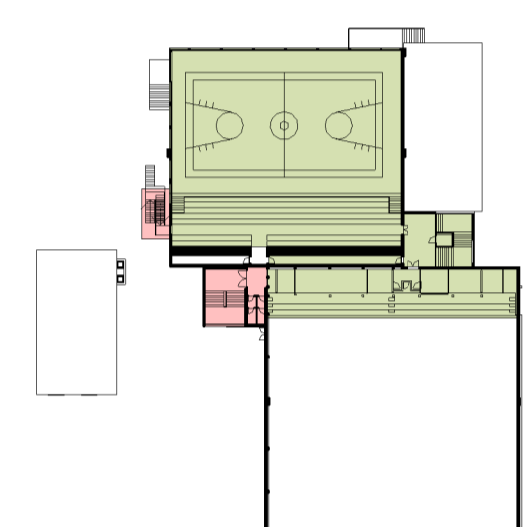
02.B 1992 - ADEGUAMENTO IMPIANTISTICO ANTINCENDIO



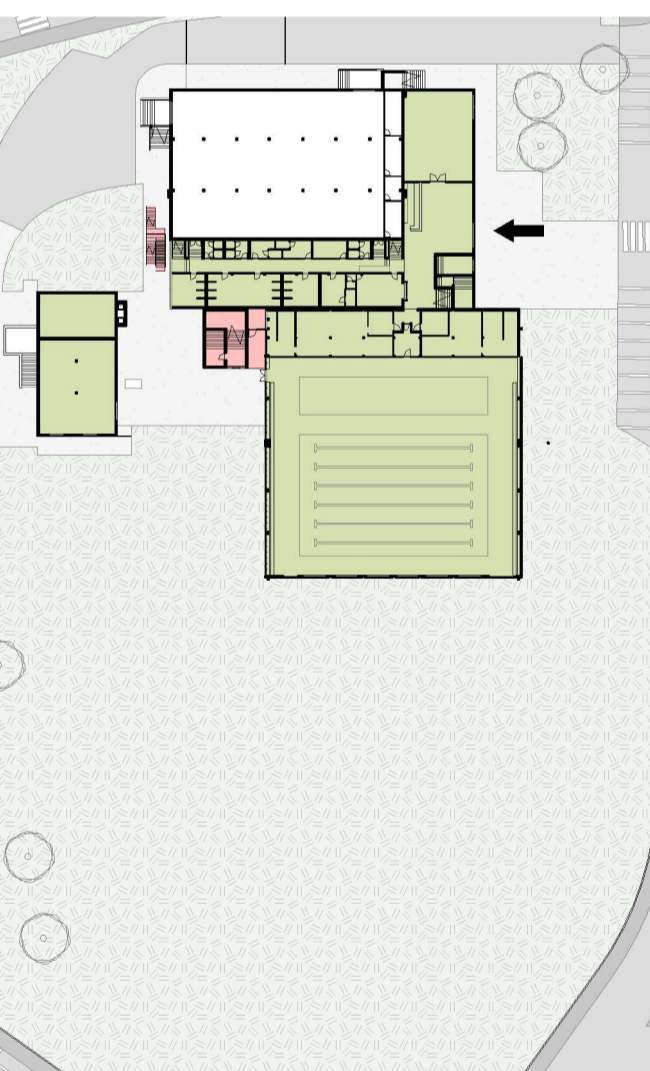
VISTA ASSONOMETRICA



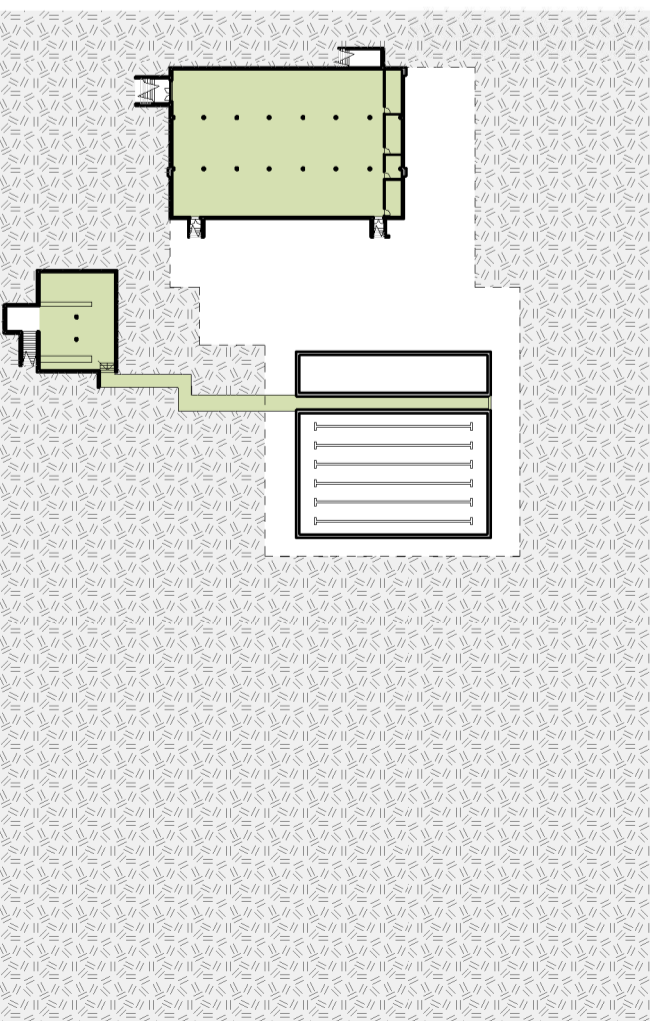
PIANTA COPERTURA



PIANTA PIANO PRIMO

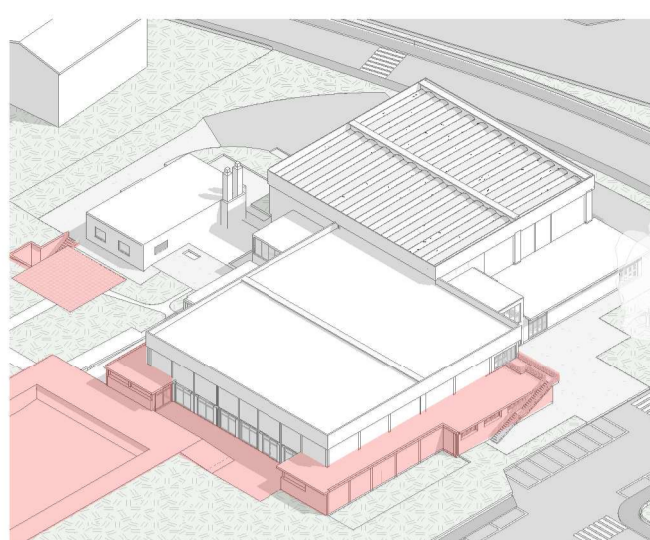


PIANTA PIANO TERRA

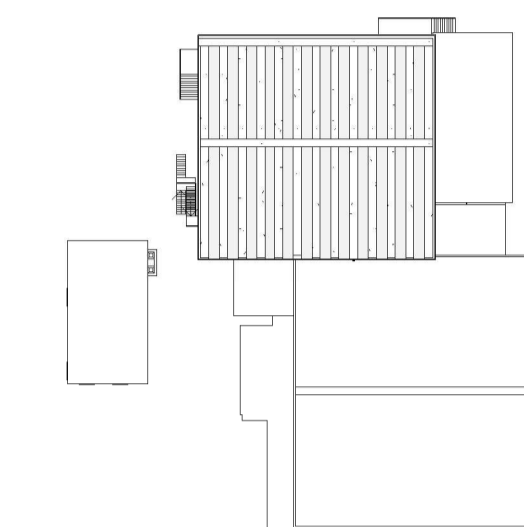


PIANTA PIANO INTERRATO

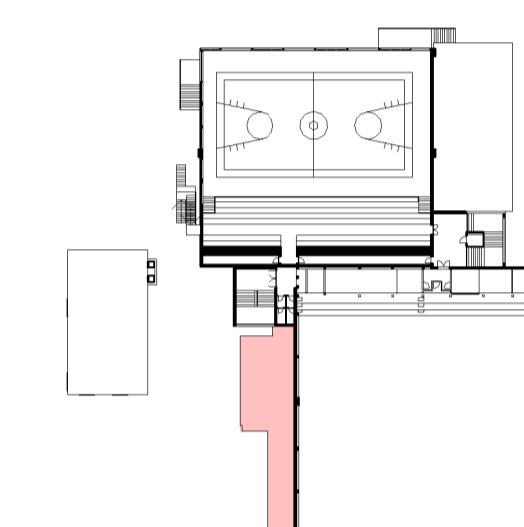
02.C 1994/1996 - AMPLIAMENTO NUOVA PISCINA ESTERNA



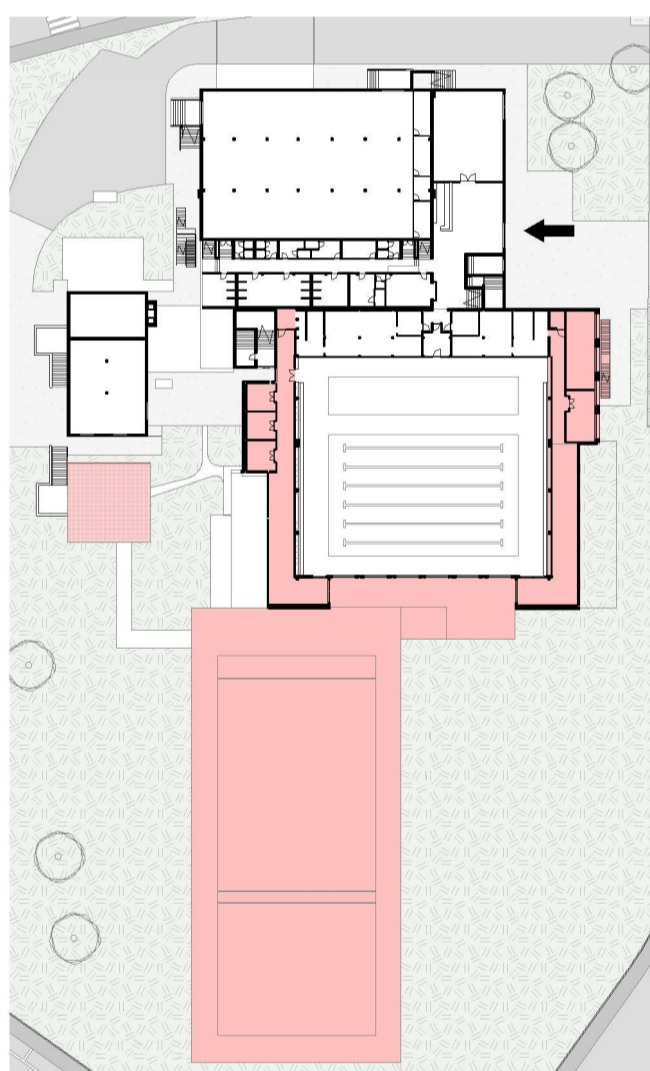
VISTA ASSONOMETRICA



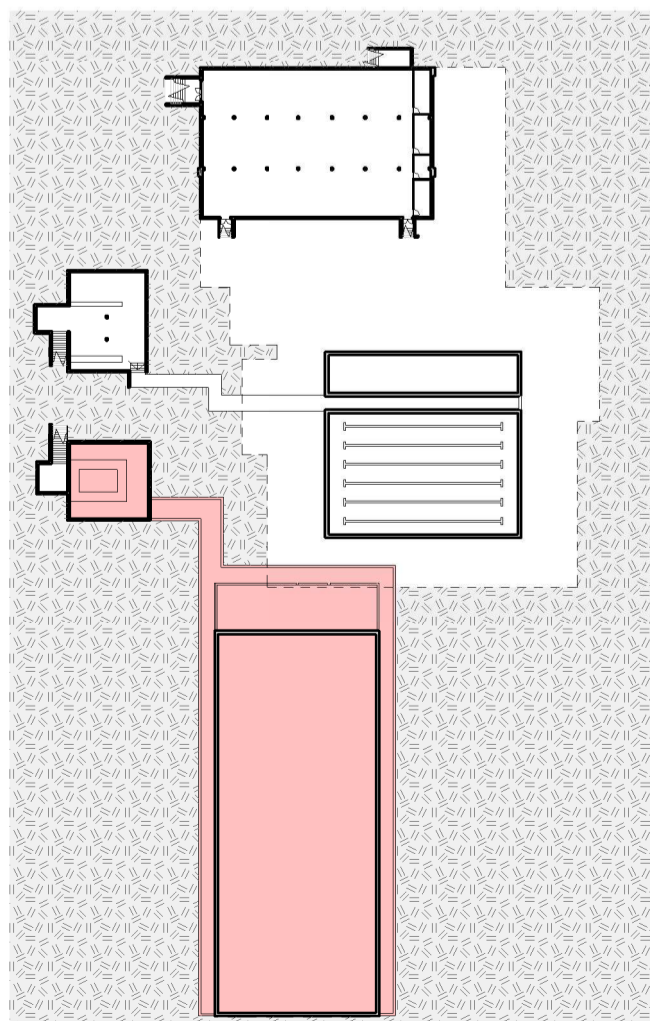
PIANTA COPERTURA



PIANTA PIANO PRIMO

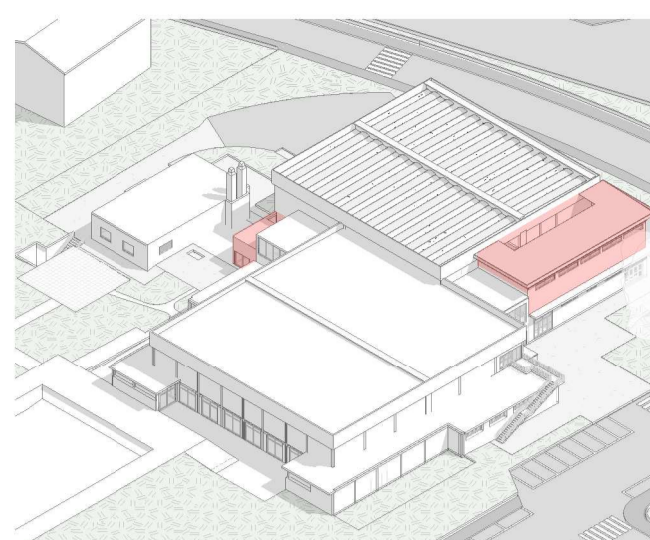


PIANTA PIANO TERRA

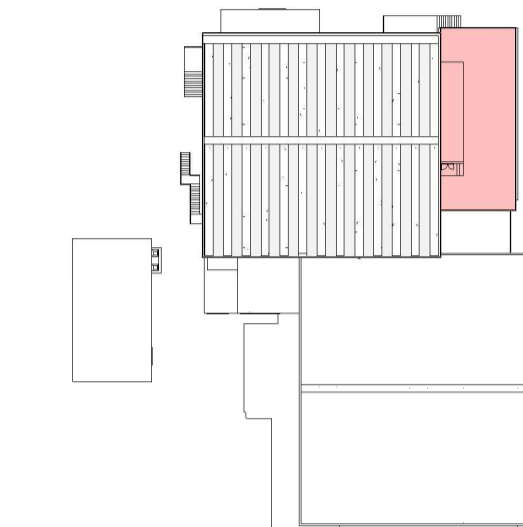


PIANTA PIANO INTERRATO

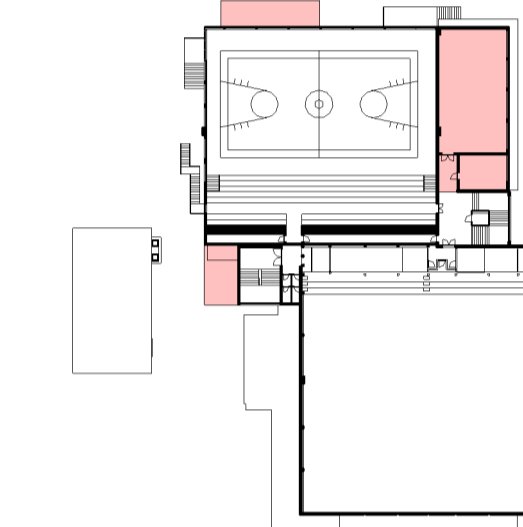
02.D 1999 - AMPLIAMENTO GRUPPO PALESTRA



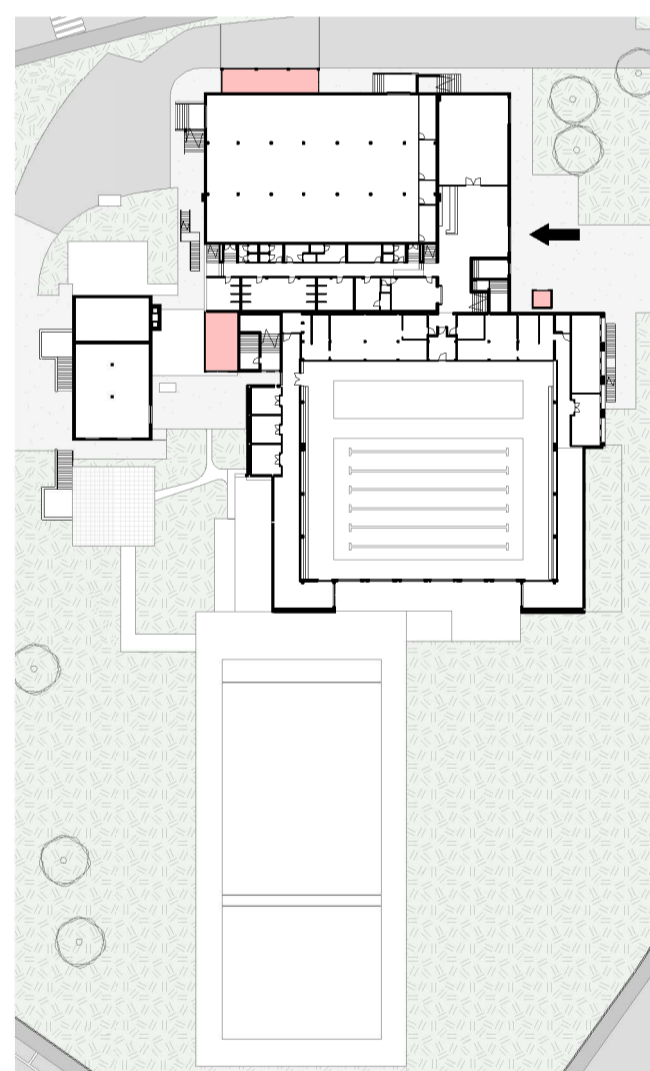
VISTA ASSONOMETRICA



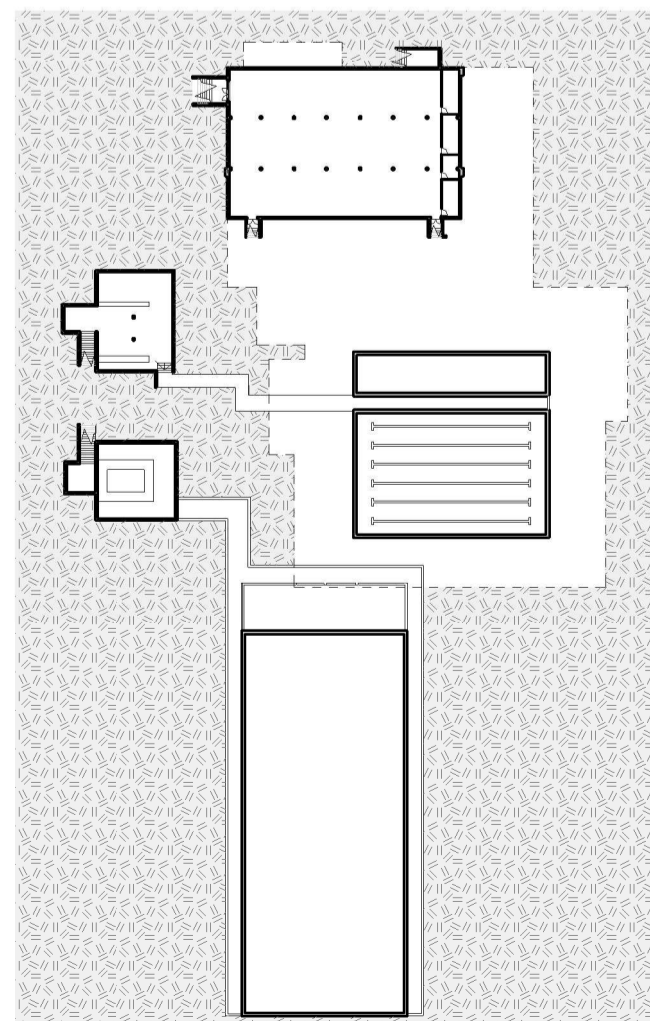
PIANTA COPERTURA



PIANTA PIANO PRIMO

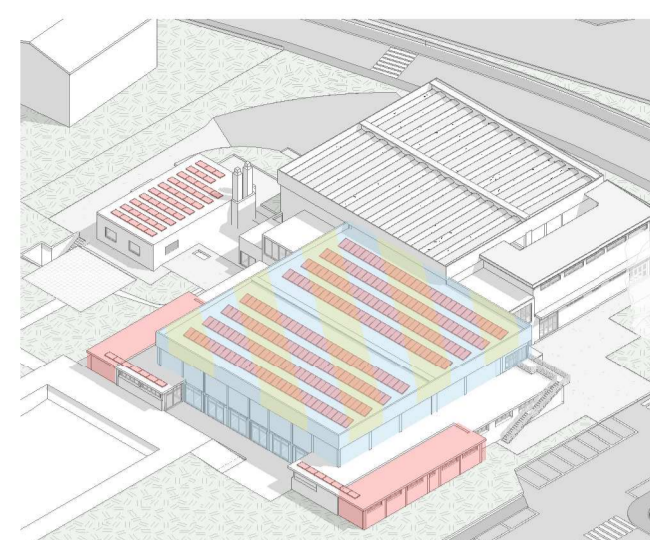


PIANTA PIANO TERRA

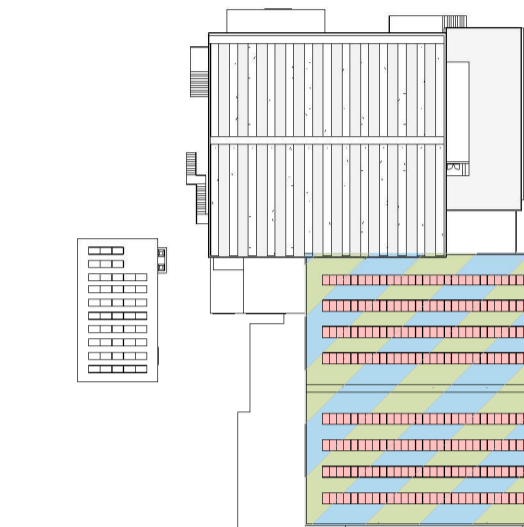


PIANTA PIANO INTERRATO

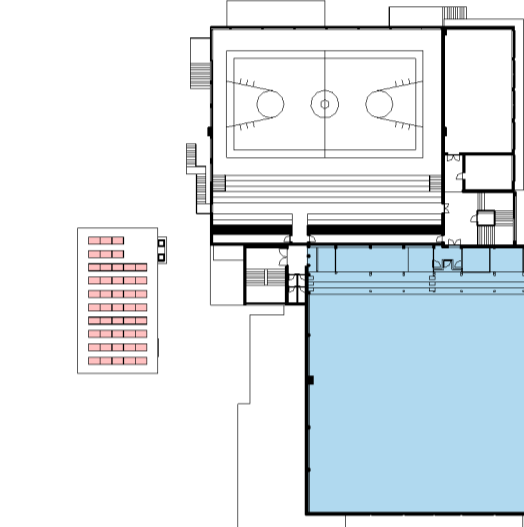
02.E 2010/2012 - MIGLIORAMENTO SISMICO CORPO PISCINA AMPLIAMENTO SPOGLIATOI PISCINA E FOTOVOLTAICO



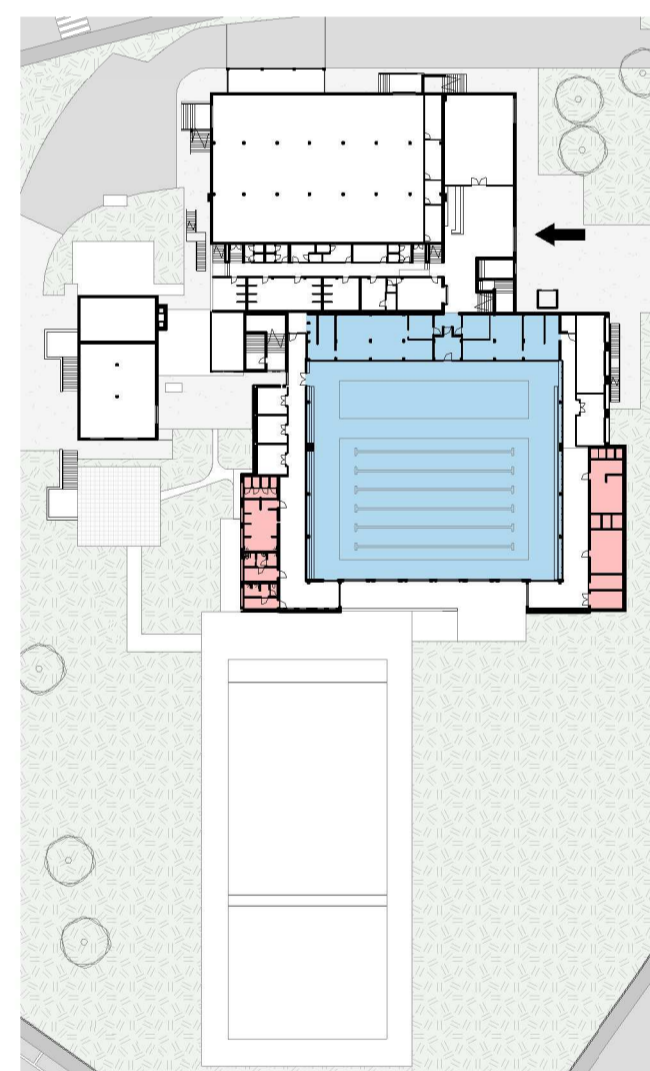
VISTA ASSONOMETRICA



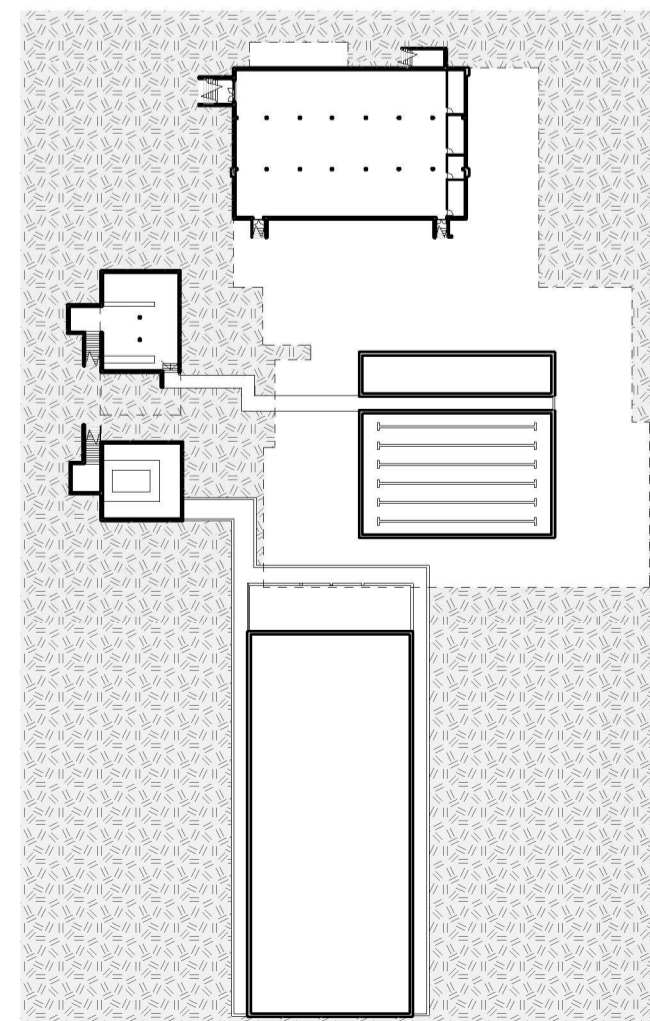
PIANTA COPERTURA



PIANTA PIANO PRIMO

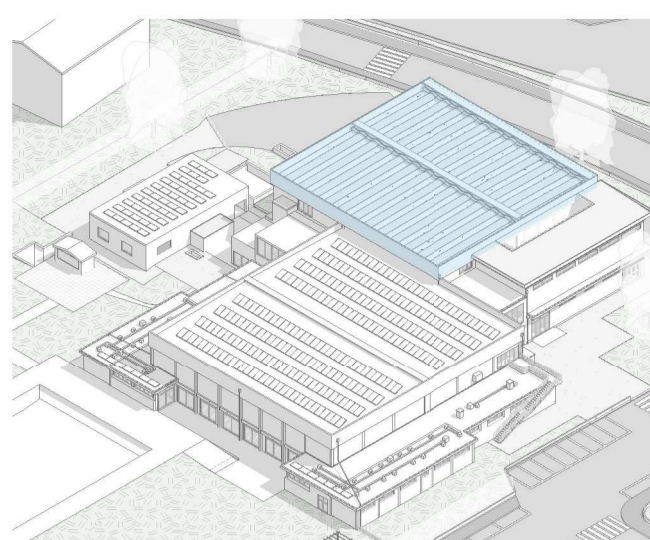


PIANTA PIANO TERRA

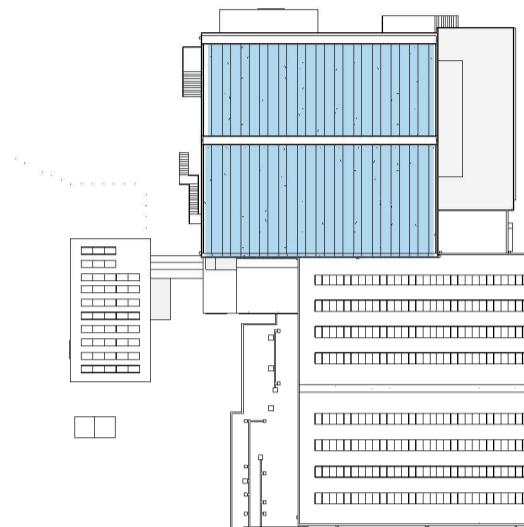


PIANTA PIANO INTERRATO

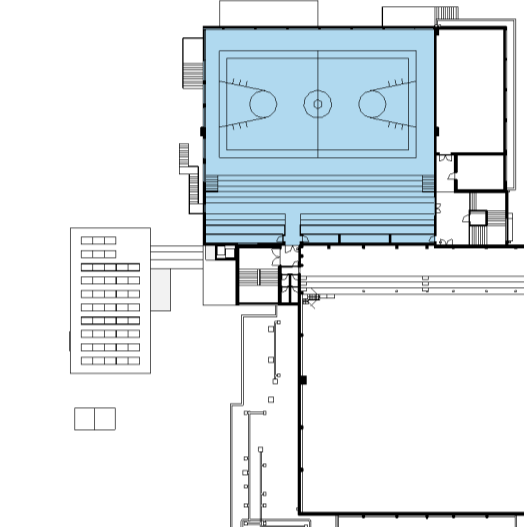
02.F 2016 - MIGLIORAMENTO SISMICO CORPO PALESTRA



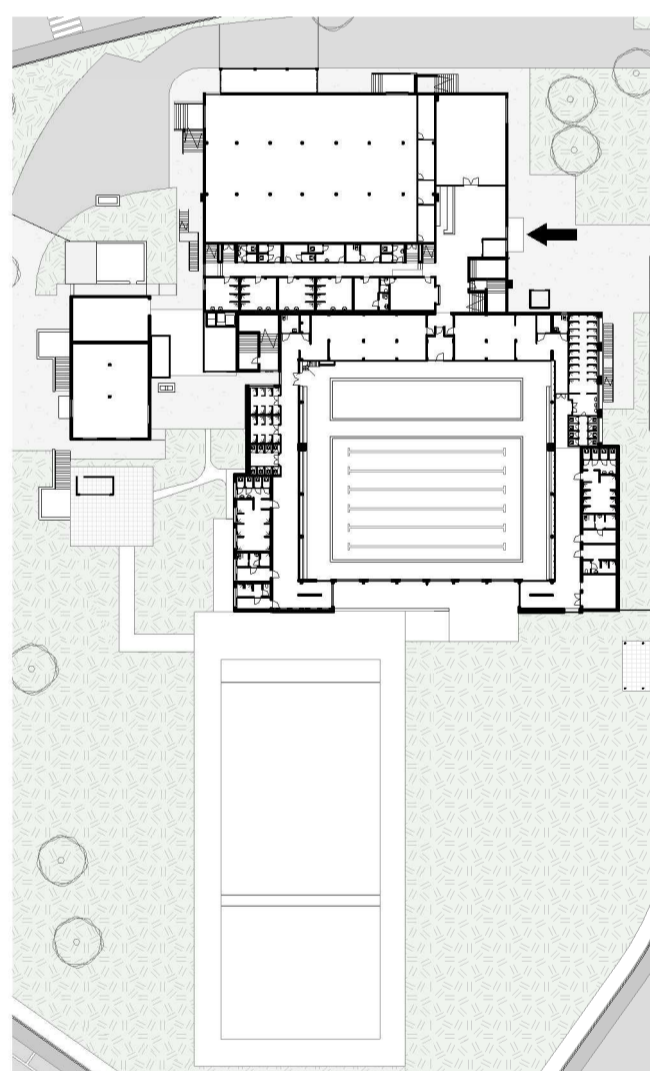
VISTA ASSONOMETRICA



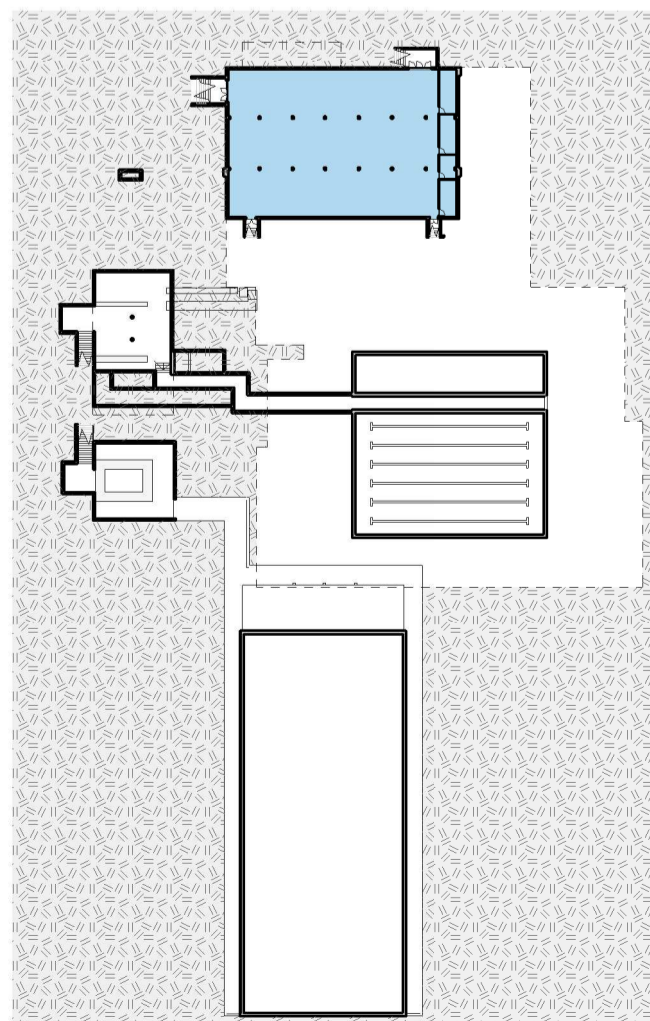
PIANTA COPERTURA



PIANTA PIANO PRIMO



PIANTA PIANO TERRA



PIANTA PIANO INTERRATO

LEGENDA AREE INTERESSATE E TIPOLOGIE DI INTERVENTI

- INTERVENTI DI NUOVE COSTRUZIONI / AMPLIAMENTI
- INTERVENTI DI ADEGUAMENTO IMPIANTISTICO
- INTERVENTI DI ADEGUAMENTO STRUTTURALE STATICO / SISMICO

committente <b>COMUNE DI ABANO TERME (PD)</b>		progettazione generale <b>ARCH. ANDREA DONDI PINTON</b>	
oggetto <b>RIQUALIFICAZIONE DEL PALAZZETTO DELLO SPORT COMUNALE</b>		progettazione specialistica	
luogo dei lavori <b>VIA VITTORIO DA FELTRE n.1 - ABANO TERME (PD)</b>			
RIP ING. ANNA MIGLIOLARO		<b>PROGETTO FATTIBILITA' TECNICA ED ECONOMICA</b>	
CUP CC ZZA379058E		titolo <b>ANALISI STORICA ED EVOLUZIONE DEL COMPLESSO</b>	
progettisti ARCH. ANDREA DONDI PINTON		<b>F.02</b>	
9hstudio andrea dondi pinton architetto		note A termini di legge il presente elaborato non è riproducibile senza il consenso scritto del Progettista e in originale.	